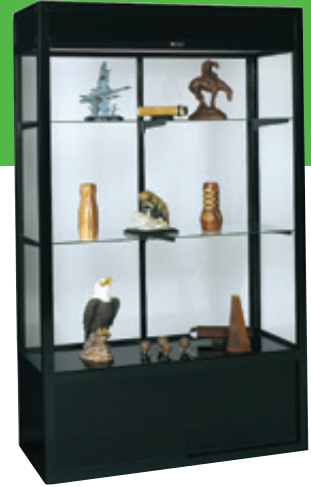


SHOWCASE AWARDS. DISPLAY COLLECTIONS. EXHIBIT MANUFACTURED GOODS. DISPLAY AND TROPHY CASES CAN BE DESIGNED TO CUSTOM-FIT YOUR SPACE AND DISPLAY NEEDS. EXTENSIVE COLLECTION OF DISPLAY CASES IS AVAILABLE IN A WIDE RANGE OF STYLES, MATERIALS AND FINISHES. SELECT FROM FREE-STANDING, WALL MOUNT, AND RECESSED CASE DESIGNS, IN WOOD OR ALUMINUM.

# 748 UNIVERSAL SERIES DISPLAY CASE



**FEATURES:**

- Case is 6'6" high and 48" wide with an outside depth of 18" and an inside depth of 15-3/4"; glass back panel
- Extruded aluminum frame; 302P Black Powder Coat finish
- Lighting at top accentuates exhibits
- 3/16" tempered glass back panel, end panels and sliding doors with flat key tumbler lock
- Three adjustable shelves with brackets and standards
- Black laminate base is 18" high and features storage space with sliding doors and lock

NUMBER	SIZE (HXW)	WEIGHT	PRICE
<b>ILLUMINATED</b>			
748	78"x48"x18"	400 lbs.	\$6020.00
<b>NO LIGHT</b>			
748A	78"x48"x18"	400 lbs.	\$5512.00

**OPTIONS:**

- For other standard Powder Coat colors, See page 51
- Other standard Wilsonart laminate colors available



## 737 UNIVERSAL SERIES DISPLAY CASE

**FEATURES:**

- Case has inside depth of 15-3/4"
- Exterior of case and interior back panel are low pressure laminate, oak grain finish
- Base is 18" high and features storage space with sliding doors and lock
- Extruded aluminum frame, satin anodize finish
- Lighting at top accentuates exhibits
- 3/16" tempered glass end panels and sliding doors with flat key tumbler lock
- Three adjustable shelves with brackets and standards

NUMBER	SIZE (HXW)	WEIGHT	PRICE
<b>ILLUMINATED</b>			
737	78"x48"x18"	400 lbs.	\$5157.00
<b>NO LIGHT</b>			
737A	78"x48"x18"	400 lbs.	\$4739.00



## 334 & 335 FREESTANDING DISPLAY CASE

**FEATURES:**

- Sturdily built freestanding cases have aluminum frames
- 334 has glass back panel; 335 has oak grain low pressure laminate back panel
- Oak grain finish base is 18" high
- 3/16" tempered sliding glass doors with flat key tumbler lock
- Three adjustable glass shelves with standards and brackets

NUMBER	FINISH	SIZE (HXWXD)	WEIGHT	PRICE
<b>GLASS BACK PANEL</b>				
334	Satin	72"x48"x18"	400 lbs.	\$4352.00
334B	Bronze	72"x48"x18"	400 lbs.	\$4802.00
<b>LOW PRESSURE LAMINATE BACK PANEL</b>				
335	Satin	72"x48"x18"	400 lbs.	\$4143.00
335B	Bronze	72"x48"x18"	400 lbs.	\$4586.00

**OPTIONS:**

- See page 51 for other standard powder coat finish colors.



## 332 WOOD BASE FREESTANDING DISPLAY CASE

**FEATURES:**

- Case has oak grained finish base 12" high
- 3/16" sliding tempered glass doors with flat key tumbler lock
- Three adjustable glass shelves

NUMBER	FINISH	SIZE (HXWXD)	WEIGHT	PRICE
332	Satin	42"x36"x12"	135 lbs.	\$2465.00
332B	Bronze	42"x36"x12"	135 lbs.	\$2666.00

**OPTIONS:**

- See page 51 for other standard powder coat finish colors.

**DELIVERY INFORMATION:**  
Freight Class 125.

**Indoff**  
www.ahutton.com  
(860)632-2026

# CLASSIC SERIES DISPLAY CASE

**FEATURES:**

- Solid wood construction
- Case has an inside depth of 15-3/4"
- Cases have 3/16" Tempered glass doors with flat key tumbler locks
- Three adjustable glass shelves
- Back panel available in Claridge Cork, Fabricork or Designer Fabric; see page 10 for color selections.

**OPTIONS:**

- Laminate back panel in your choice of standard Wilsonart laminates
- For optional light, specify 650 LIGHT ADD and add \$412.00.



HINGED DOOR	PRICE	SLIDING DOOR	PRICE	FINISH	SIZE	WEIGHT
650N	\$8439.00	651N	\$8341.00	Natural Oak	72"x48"x18"	400 lbs.
650M	\$8439.00	651M	\$8341.00	Medium Oak	72"x48"x18"	400 lbs.
650MS	\$8829.00	651MS	\$8663.00	Mahogany	72"x48"x18"	400 lbs.
650MA	\$8943.00	651MA	\$8729.00	Maple	72"x48"x18"	400 lbs.
650CH	\$9238.00	651CH	\$8986.00	Cherry	72"x48"x18"	400 lbs.



### 331 FREESTANDING DISPLAY CASE

**FEATURES:**

- Aluminum case has square legs 12" high
- 3/16" sliding tempered glass doors with flat key tumbler lock
- Three adjustable glass shelves

**OPTIONS:**

- See page 51 for other standard powder coat finish colors.

NUMBER	FINISH	SIZE (HXWXD)	WEIGHT	PRICE
331	Satin	42"x36"x12"	125 lbs.	\$2206.00
331B	Bronze	42"x36"x12"	125 lbs.	\$2598.00



SHOWN WITH OPTIONAL POWDER COAT FINISH

### 329 & 327 TABLE EXHIBIT CASE

**FEATURES:**

- Designed for use in libraries, lobbies, museums, etc., aluminum case has 1-1/8" square legs; glides included
- Table Exhibit Case has glass top with continuous piano hinge and flat key tumbler lock
- Bottom of case is oak grained low pressure laminate

NUMBER	FINISH	SIZE (HXWXL)	WEIGHT	PRICE
329	Satin	36"x24"x48"	250 lbs.	\$2565.00
329B	Bronze	36"x24"x48"	250 lbs.	\$2917.00
327	Satin	36"x30"x60"	310 lbs.	\$2917.00
327B	Bronze	36"x30"x60"	310 lbs.	\$3207.00

**OPTIONS:**

- See page 51 for other standard powder coat finish colors.



### 742 FREESTANDING DISPLAY CASE

**FEATURES:**

- Hardwood frame with Natural Oak finish; base is 12" deep
- 3/16" tempered glass sliding glass doors with flat key tumbler locks
- Three 10" adjustable shelves

NUMBER	SIZE (HXWXD)	WEIGHT	PRICE
<b>GLASS BACK PANEL</b>			
742	42"x36"x12"	135 lbs.	\$2105.00
<b>MIRROR BACK PANEL</b>			
742A	42"x36"x12"	135 lbs.	\$2270.00

**OPTIONS:**

- For optional woods and finishes, see page 51. If required, specify and ADD \$106.00.

# I453 NOUVEAU SERIES DISPLAY CASE

NOUVEAU CASES FEATURE POWDER COAT FINISH ALUMINUM WITH COORDINATING WILSONART LAMINATE BASES. SPECIFY FINISH FROM STANDARD POWDER COAT AND STANDARD WILSONART LAMINATES.

**FEATURES:**

- Contemporary radius face design features large, unobstructed view
- Specify powder coat and laminate color. Shown in RAL7002 Olive Gray Powder Coat finish with Galvan Wilsonart laminate.
- Base is 18" high
- 3/16" tempered sliding glass doors with lock and three adjustable glass shelves
- Concealed lighting

NUMBER	SIZE (HXWXD)	WEIGHT	PRICE
I453	78"x48"x18"	500 lbs.	\$5629.00



## I450 NOUVEAU SERIES DISPLAY CASE

**FEATURES:**

- Contemporary radius face design
- Specify powder coat and laminate color. Shown in 314P Bronze with Tungsten Wilsonart laminate base.
- Base is 18" high
- 3/16" tempered sliding glass doors with lock and three adjustable glass shelves

NUMBER	SIZE (HXWXD)	WEIGHT	PRICE
I450	42"x36"x12"	135 lbs.	\$3213.00



## I451 NOUVEAU SERIES DISPLAY CASE

**FEATURES:**

- Contemporary radius face design
- 3/16" tempered sliding glass doors with lock and three adjustable glass shelves
- Specify powder coat and laminate color. Shown in RAL6005 Moss Green Powder Coat finish with Verdi Pompeii Wilsonart Laminate inside case bottom.
- Base is 4" high

NUMBER	SIZE (HXWXD)	WEIGHT	PRICE
I451	42"x36"x12"	145 lbs.	\$3343.00



## I452 NOUVEAU SERIES DISPLAY CASE

**FEATURES:**

- Contemporary radius face design features full view from every side
- Specify powder coat and laminate color. Shown in RAL5013 Cobalt Blue Powder Coat finish with Canyon Blue Wilsonart laminate.
- Base is 18" high
- 3/16" tempered hinged glass doors with lock and three adjustable glass shelves
- Concealed lighting

NUMBER	SIZE (HXWXD)	WEIGHT	PRICE
I452	78"x24"x24"	265 lbs.	\$5097.00

DELIVERY INFORMATION:  
Freight Class 125.

**Indoff**  
www.ahutton.com  
(860)632-2026

# PREMIERE FREESTANDING CASES

**FEATURES:**

- Constructed in one continuous piece, Premiere cases do not require wall support
- Tackable back panels in Claridge Cork, Fabricork, Designer Fabric, Hook-Fab, and Tan Nucork. See page 10 for color selections. Back panels also available in walnut or oak grain low pressure laminate.
- Frame is heavy-gauge satin anodize aluminum; inside depth is 13-3/4"
- Oak or walnut grain low pressure laminate base and aluminum legs are 18" high
- 3/16" tempered glass sliding doors with locks and keys, and three 6-, 8-, 10- or 12-inch wide adjustable glass shelves
- Floor leveling glides included

**OPTIONS:**

- Intermediate sizes available
- For optional Lights, specify Light ADD and add \$275.00.
- For Medium or Dark Bronze anodize in lieu of satin anodize, specify Premiere Free BA ADD and add \$2850.00.
- For Powder Coat finish in lieu of satin anodize, specify Premiere Free PC ADD and add \$918.00.

Note: Specify shelf width, frame finish and type and color of back panel.

ALUM LEGS	PRICE	WOOD BASE	PRICE	# OF DOORS	SIZE	WEIGHT
456	\$4039.00	470	\$4473.00	1 pair	5'6" x 4' x 1'4"	320 lbs.
457	\$4401.00	471	\$4850.00	1 pair	5'6" x 5' x 1'4"	400 lbs.
458	\$4537.00	472	\$5002.00	1 pair	5'6" x 6' x 1'4"	480 lbs.
463	\$7213.00	474	\$7626.00	2 pairs	5'6" x 8' x 1'4"	640 lbs.
465	\$8003.00	475	\$8433.00	2 pairs	5'6" x 10' x 1'4"	800 lbs.
467	\$10066.00	476	\$10641.00	3 pairs	5'6" x 12' x 1'4"	960 lbs.
469	\$11589.00	478	\$12208.00	3 pairs	5'6" x 16' x 1'4"	1280 lbs.



## PREMIERE WALL MOUNTED DISPLAY CASE

**FEATURES:**

- Constructed of heavy-gauge satin anodize aluminum
- Inside depth is 13-3/4"
- Tackable back panels in Claridge Cork, Fabricork, Designer Fabric, Hook-Fab, and Tan Nucork. See page 10 for color selections. Back panels also available in walnut or oak grain low pressure laminate.
- 3/16" tempered glass sliding doors with locks and keys, and three 6-, 8-, 10- or 12-inch wide adjustable glass shelves
- Angle hangers

**OPTIONS:**

- Intermediate sizes available
- For optional Lights, specify Light ADD and add \$275.00.
- For Medium or Dark Bronze anodize in lieu of satin anodize, specify Premiere Wall BA ADD and add \$2790.00.
- For Powder Coat finish in lieu of satin anodize, specify Premiere Wall PC ADD and add \$874.00.

Note: Specify shelf width, frame finish and type and color of back panel.

NUMBER	DOORS	SIZE (HxWxD)	WEIGHT	PRICE
479	1 pair	4' x 3' x 1'4"	216 lbs.	\$3797.00
481	1 pair	4' x 4' x 1'4"	288 lbs.	\$4101.00
482	1 pair	4' x 5' x 1'4"	360 lbs.	\$4452.00
483	1 pair	4' x 6' x 1'4"	432 lbs.	\$4555.00
484	2 pair	4' x 8' x 1'4"	640 lbs.	\$6799.00
485	2 pair	4' x 10' x 1'4"	800 lbs.	\$7589.00
486	3 pair	4' x 12' x 1'4"	960 lbs.	\$9471.00
488	3 pair	4' x 16' x 1'4"	1280 lbs.	\$11039.00



## WALL MOUNTED OR TABLE TOP DISPLAY CASE

**FEATURES:**

- Aluminum framed case, in finish noted, for Wall Mount (333) or Table Top (330) use
- 333 has Tan Nucork or low pressure laminate back panel
- 3/16" tempered glass sliding doors with flat key tumbler lock and three adjustable glass shelves
- Angle hangers furnished with 333 case

**OPTIONS:**

- See page 51 for other standard powder coat finish colors.

NUMBER	FINISH	SIZE (HXWXD)	WEIGHT	PRICE
TABLE TOP CASE-GLASS BACK PANEL				
330	Satin	30" x 36"x12"	120 lbs.	\$2172.00
330B	Bronze	30" x 36"x12"	120 lbs.	\$2386.00
WALL MOUNTED CASE				
333	Satin	30" x 36"x12"	120 lbs.	\$2022.00
333B	Bronze	30" x 36"x12"	120 lbs.	\$2276.00