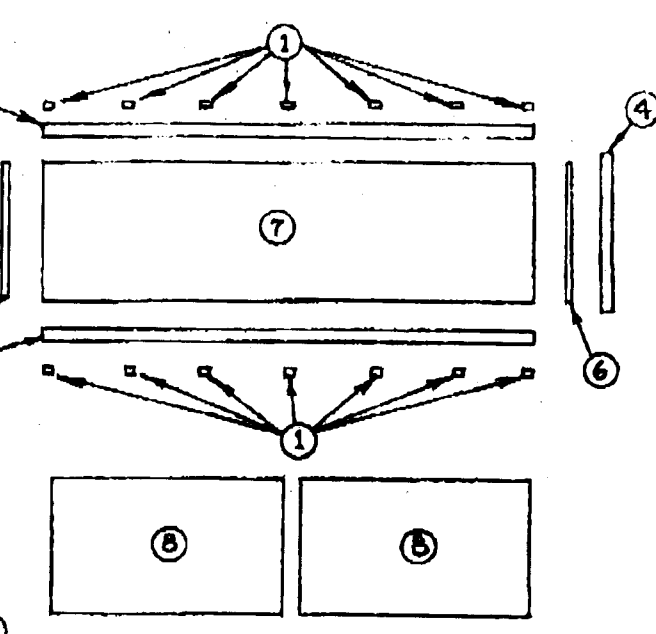
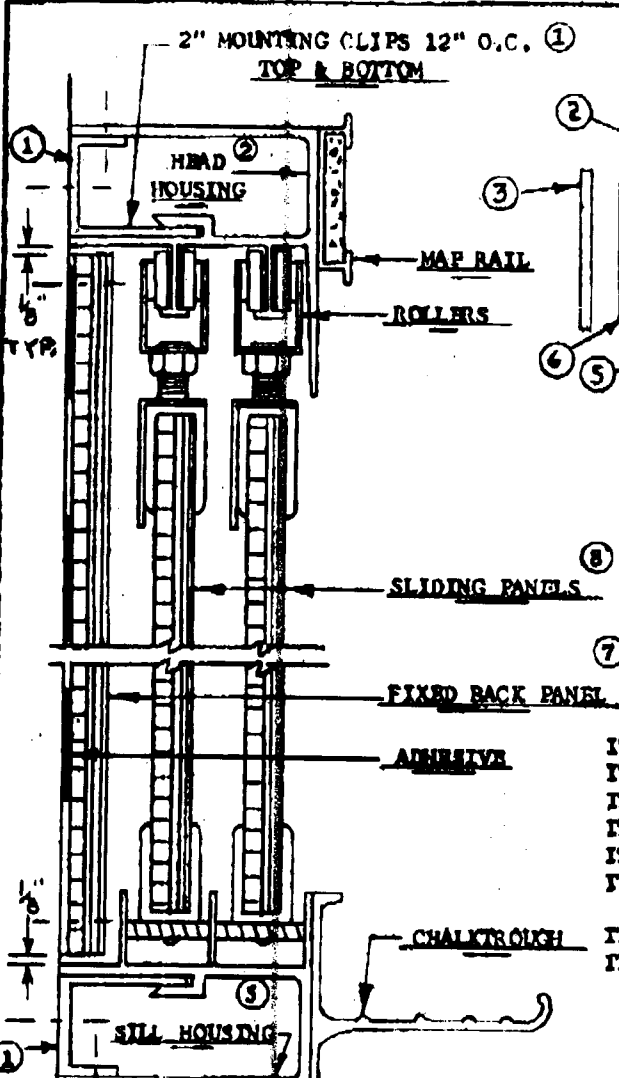


Indoff
140 WEST WYND TERRACE
MIDDLETOWN, CT 06457
(860) 632-2026
FAX (860) 632-2028
www.ahutton.com

INSTALLATION INSTRUCTIONS FOR HORIZONTAL SLIDING UNITS

1. Lay out and identify all parts. See reverse side of this sheet for numbers.
2. Fasten top and bottom clips to wall on 12" centers being sure clips are level.
3. Slide rollers onto tracks in top member. Be sure openings in rollers on front track face to the rear and openings for rollers on all other tracks face forward. (On 3 or 4 track units, rollers on tracks 1 and 3 must face to the rear.)
4. Install fixed back panel to wall with egg-sized globs of adhesive 16" on centers. The clearance between the back panel and sliding panel is close. Be sure not to get too much adhesive or allow the back panel to stick out any farther from the wall than necessary. 1/8" clearance is allowed at top, bottom, and sides of fixed back panel. (See reverse side of this sheet.) Install back panel jamb trim members. No head or sill trim is required.
5. Fasten right and left hand jamb housing members to top and bottom members with screws provided.
6. Position complete frame onto hanger clips previously screwed to wall in step 2.
7. Drill 9/64" diameter holes through housing into clips at top and bottom. Secure frame to clips with screws provided.
8. Position sliding panels in unit by inserting top of panel between tracks and moving it up as far as possible. Tilt bottom of panel into guide channel and let panel rest on lower housing.
9. Slide rollers over hooks in panel. Lift panel and slide hooks into opening in rollers. Tighten nut on rollers to roller assembly.

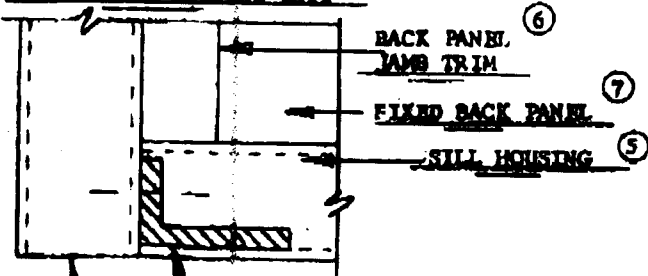


PARTS LAYOUT IDENTIFICATION

- ITEM #1 - 2" MOUNTING CLIPS 12" O.C. TOP & BOTTOM
- ITEM #2 - HEAD HOUSING WITH MAP RAIL.
- ITEM #3 - LEFT JAMB HOUSING.
- ITEM #4 - RIGHT JAMB HOUSING.
- ITEM #5 - SILL HOUSING WITH CHALKTROUGH.
- ITEM #6 - BACK PANEL JAMB TRIM, NO SILL OR HEAD TRIM REQUIRED FOR BACK PANEL.
- ITEM #7 - FIXED BACK PANEL, MOUNT TO WALL.
- ITEM #8 - SLIDING PANELS.

SEE OTHER SIDE OF THIS SHEET FOR INSTALLATION SEQUENCE

SECTION THROUGH HORIZONTAL SLIDING UNIT

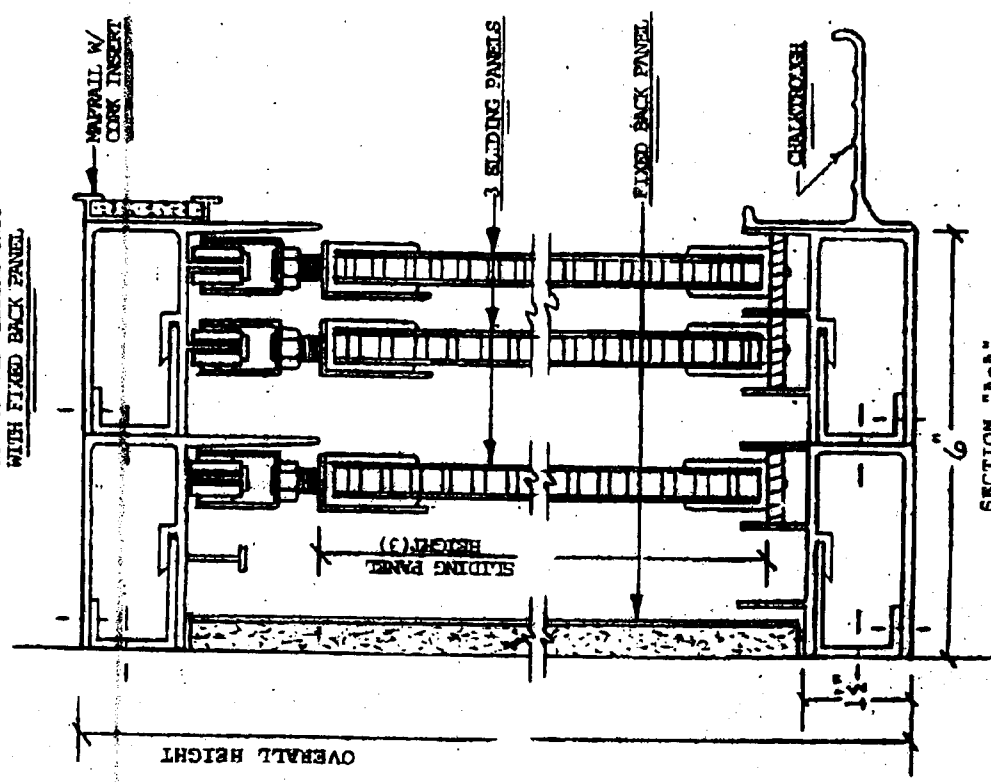


SECTION DETAILS
SCALE = 1/2 FULL SIZE

JAMB HOUSING (3) CORNER ANGLES REMOVE SCREWS FROM TOP & BOTTOM

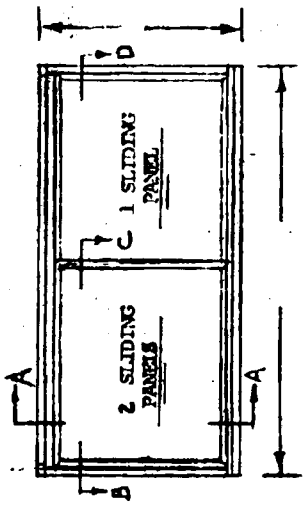


CLARIDGE 3 TRACK 3 PANEL
HORIZONTAL SLIDING UNIT
WITH FIXED BACK PANEL



SECTION "A-A"
SCALE 1/2" = 1' FULL SIZE

TYPICAL ELEVATION



ORDER NO.		SCALE		DRAWN BY		CHECKED BY		DATE		INSTALLER	
REV. BY		REV. BY		DATE REV.		DATE		SHEET OF		DISTRIBUTION	
PROJECTS AND EQUIPMENT, INC. 1001 W. WASHINGTON MEMPHIS, ARKANSAS 38107										DISTRIBUTION CONTRACTOR ARCHITECT	