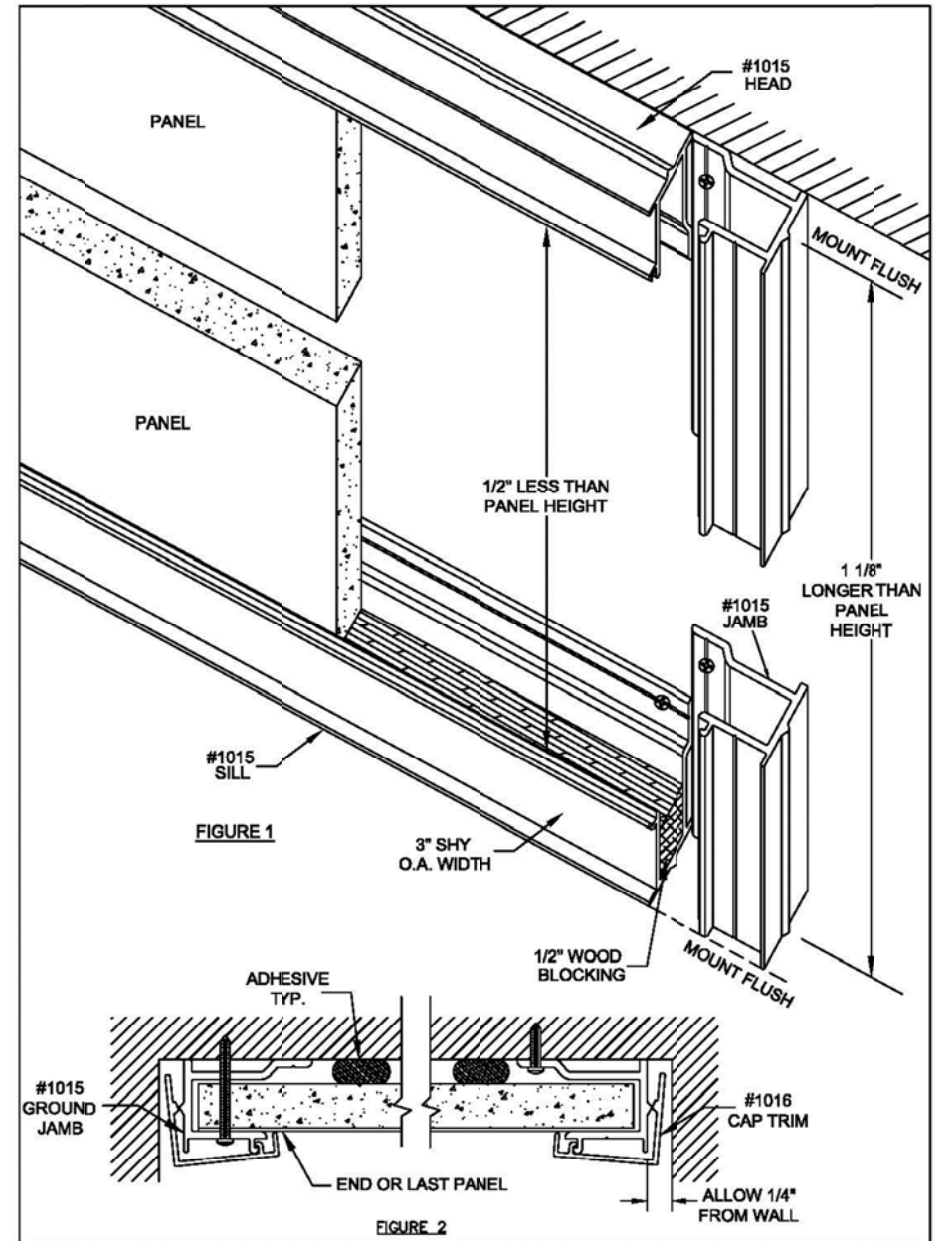


**MARKER WALL
INSTALLATION INSTRUCTIONS**

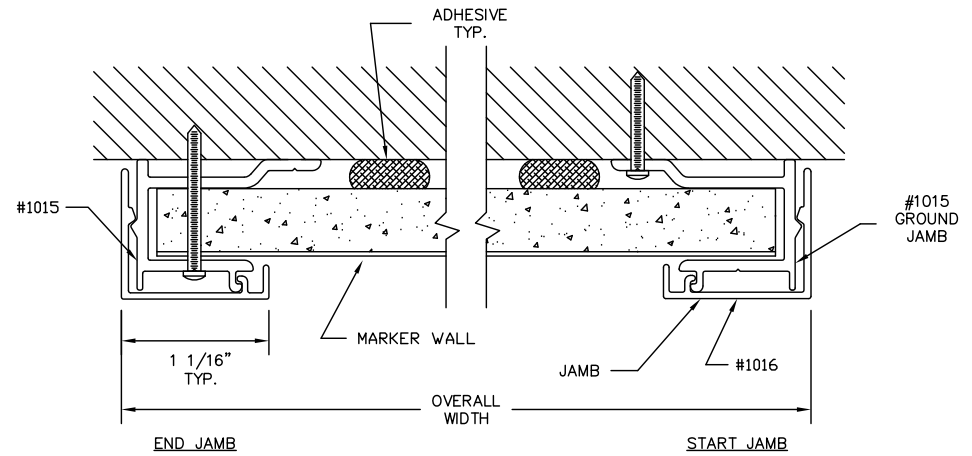
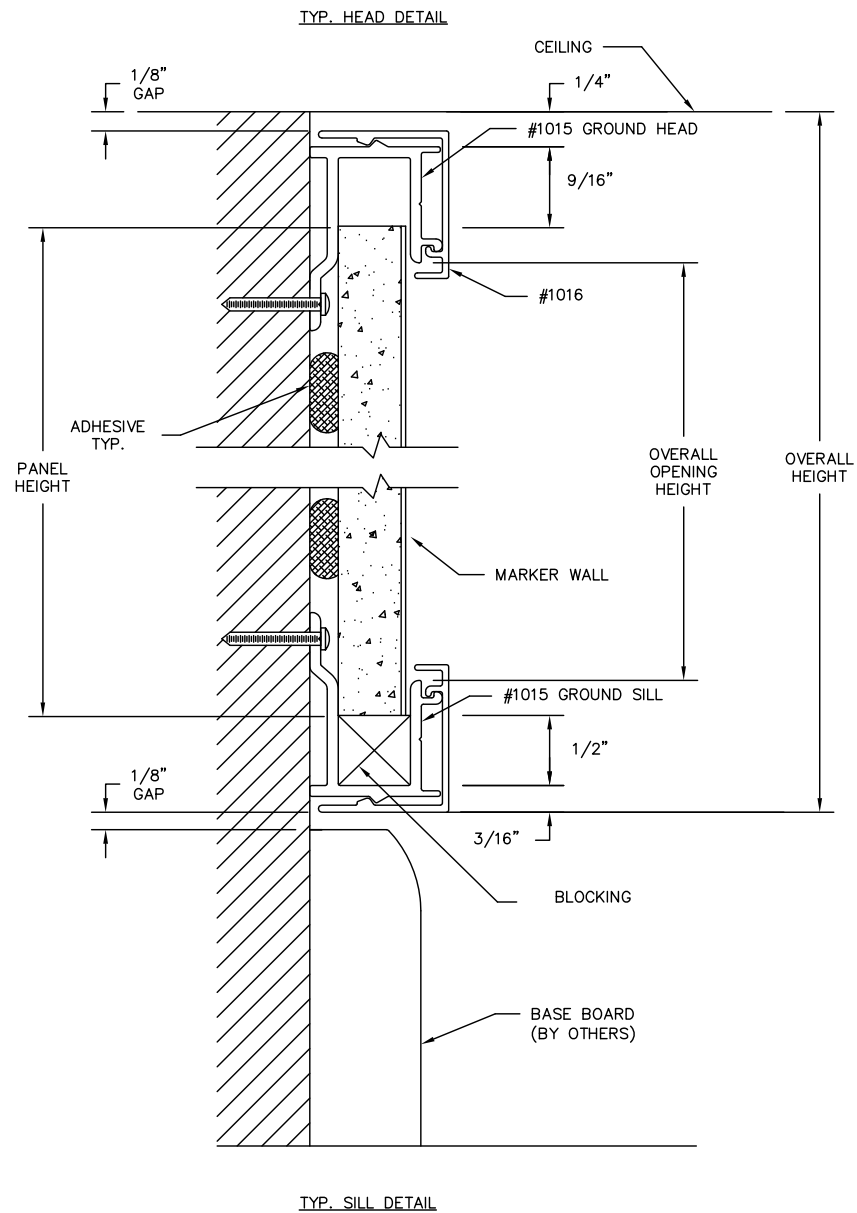
1. Install No. 1015 Ground Sill maintaining 1/4" space above floor (or base board, if already installed). Cut sill 3" shi of overall width of installation, allowing 1-1/4" on each side. Insert 1/2" blocking. (See Figure 1) Make sure sill is level.
2. Install No. 1015 Ground Jamb starting from either side. Align jamb corner with sill corner. Make sure it is plumb. Note: Jamb must be 1-1/8" longer than panel height.
3. Install No. 1015 Ground Head maintaining 1/4" from ceiling. Cut shi 3" of overall width and mount inside jamb. Note: Overall opening height must be 1/2" shorter than panel height. (See Figure 1)
4. If wall-to-wall installation, allow 1/8" to 1/4" space so No. 1016 Trim can be snapped into place.
5. Apply egg-size gobs of adhesive to back of first panel, staggered on approximate 2' centers. Install panel by inserting into head trim, swinging bottom of panel over sill trim and setting down onto blocking. Adjust panel sideways to fit inside jamb trim. Compress glue to flush panel face and adjust so open side is plumb. Note: Shoring may be necessary.
6. Repeat with additional panels, using chosen joint connection, until all panels are installed.
7. When positioning the last panel, slide the 1015 Bottom Ground trim over the panel to complete the installation. Cap both jambs with No. 1016 Trim. Note: No. 1016 Trim must be cut 1/4" longer than No. 1015 Jamb. Then, cut No. 1016 Trim for head and sill to fit between jambs. (See Figure 2)



CLARIDGE PRODUCTS AND EQUIPMENT, INC.
P. O. BOX 910
HARRISON, ARKANSAS 72602-0910
PHONE: 870-743-2200
FAX: 870-743-1908
www.claridgeproducts.com

CLARIDGE MARKER WALL UNITS

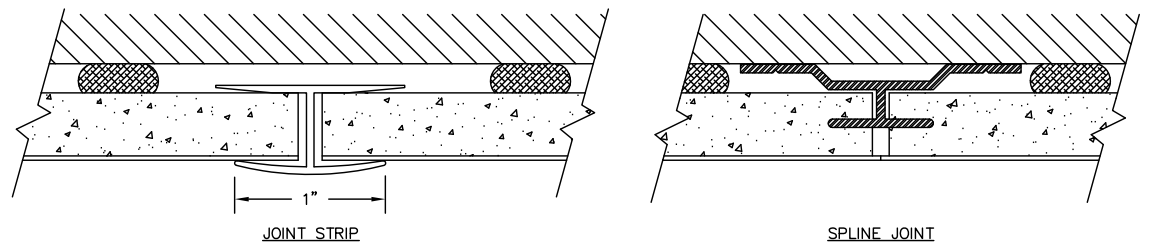
TRIM SECTION DETAILS



NOTE:
END JAMB TRIM CAN BE INSTALLED DIRECTLY OVER END OF PANEL WITHOUT REQUIRING ANY SIDEWAYS MOVEMENT, THUS ALLOWING WALL TO WALL INSTALLATION.

NOTE:
AFTER FIRST PANEL IS SEATED IN HEAD AND SILL TRIM IT MUST BE MOVED SIDEWAYS TO SLIDE INSIDE JAMB TRIM.

TRIM PATTERN
JAMBS ARE FULL HEIGHT
HEAD AND SILL TO BE CUT TO
FIT BETWEEN JAMBS.



OPTIONS FOR JOINING PANELS